



Excellence in Industrial Software Since 1975

QUICKPLATE BUILDER

Drag & Drop Parts

Imports DXF Files

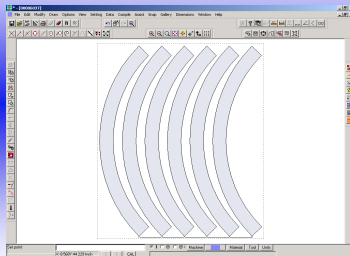
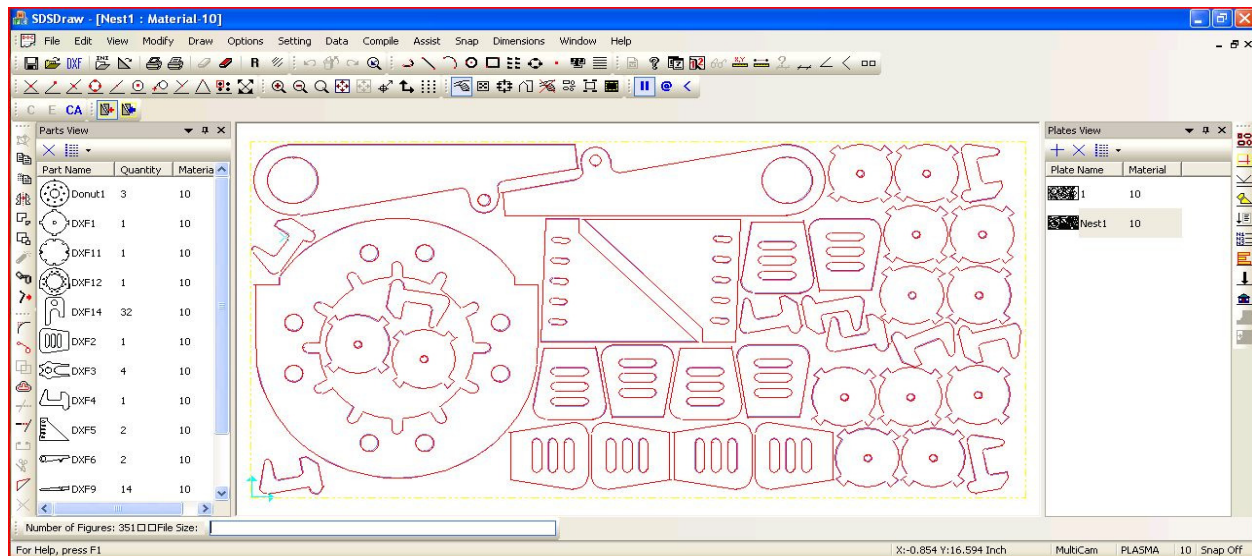
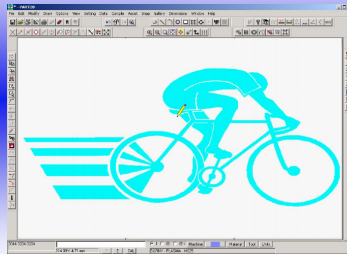
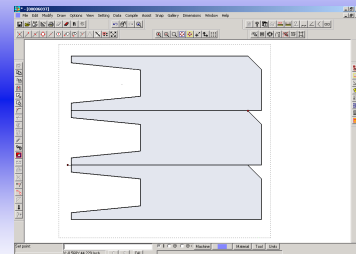
Automatic Shape Nesting

Automatic Tooling

Raster to Vector Conversion

CNC Cutting

www.shopdata.com

**Chain Cutting****Raster to Vector****Common Line Cutting**

- ◆ **Drag & Drop Parts**
- ◆ **Imports DXF Files**
- ◆ **Automatic Shape Nesting**
- ◆ **Automatic Tooling**
- ◆ **Raster to Vector Conversion**
- ◆ **CNC Cutting**

QuickPlate Builder is the quickest way to build a nested plate!

QuickPlate Builder's simple one screen processing has all the features you need to design, draw, and nest your parts for CNC cutting.

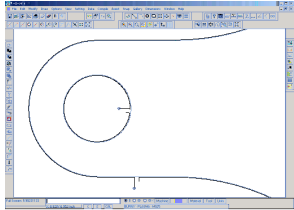
Build plates rather than entire jobs—for an economical price for your 2010 budget



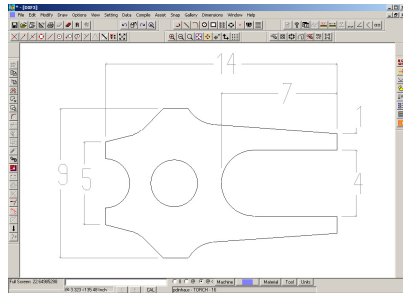
DXF import & CAD drawing

Use ShopData for Windows' visual drawing tools to design the simplest or most complex of parts. Or import DXF files individually or in batches – they're automatically tooled, ready to nest and cut as parts!

With Windows' incredible technology you can easily drag & drop, copy, move, and rotate parts, or move lead-ins and lead-outs anywhere along the tool path or on the nested sheet. Work with multiple drawings simultaneously. Utilize dynamic zoom capability for ultimate precision in your



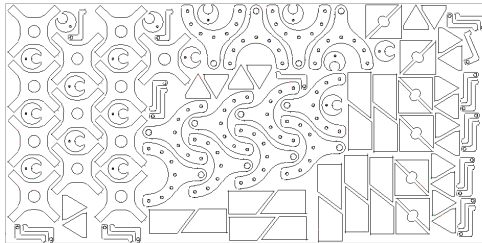
Micro-tabs



drawings. Then automatically tool parts for multiple tools using SDS' innovative "layers" technology.

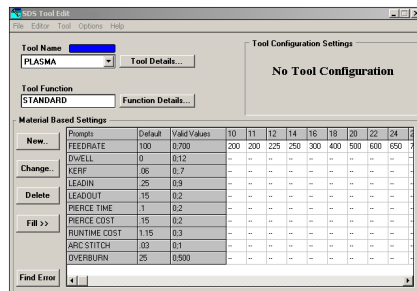
Advanced Shape Nest

QuickPlate Builders' Advanced Shape Nest automatically lays parts side by side and rotates them to match interlocking angles and contours. Part "pairing" maximizes material usage through piece placement. Advanced Shape Nest automatically nests parts inside internal cutouts for the highest nesting precision. Other nesting features include chain cutting, move & bump manual nesting (with mouse-controlled part rotation), feature avoidance, and part tabs.



Powerful machine tool configuration

ShopData's Tool Edit module manages all of your tools and post processors. Many process parameters like kerf, lead-in/lead-out, feedrate, etc. can be controlled, automated, and integrated directly with the CNC file, while still allowing "on-the-fly" attribute changes when desired.

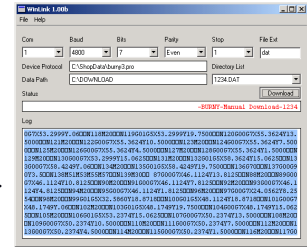


Programmable post processor

ShopData provides and supports programmable post processors for most CNC applications (waterjet, laser, plasma combination, and more).

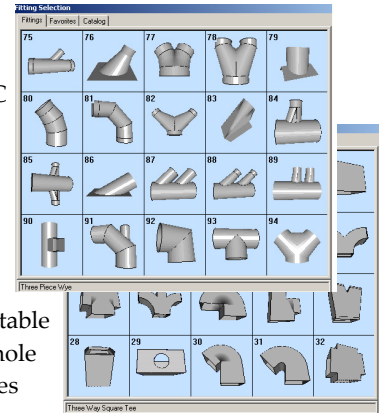
WinLink communication

ShopData for Windows allows continuous access to your library of parts and nested sheets. Download and upload from/to your PC.

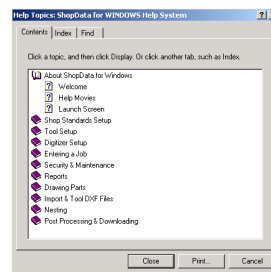


Optional - Fitting Library

Various fitting libraries are available including Industrial, Blowpipe or full HVAC which includes cones, offsets, elbows, wyes, branch fittings and square-to-rounds. Capabilities such as mitering, reducing, concentric/eccentric dimensioning are available as well as selectable seam placement, selectable hole sizing, dual wall, tie rod holes and inside/outside diameter material compensation.



On-line help



Visual on-line help for all features, plus help "movies" which actually step you through specific system functions.

Personalized training & support

ShopData backs its software with 120+ collective years of metal fabricating experience and 35+ years in business. No cutting software company has more expertise! We offer hands-on, customized training at your site or ours. Take advantage of our 24/7 phone support through the annual ShopSource Support and Upgrade program.



SHOP DATA
SYSTEMS

SDS

Shop Data Systems, Inc.
712 East Walnut Street.
Garland, Texas 75040
972-494-2719
Fax 972-272-7062
www.shopdata.com